




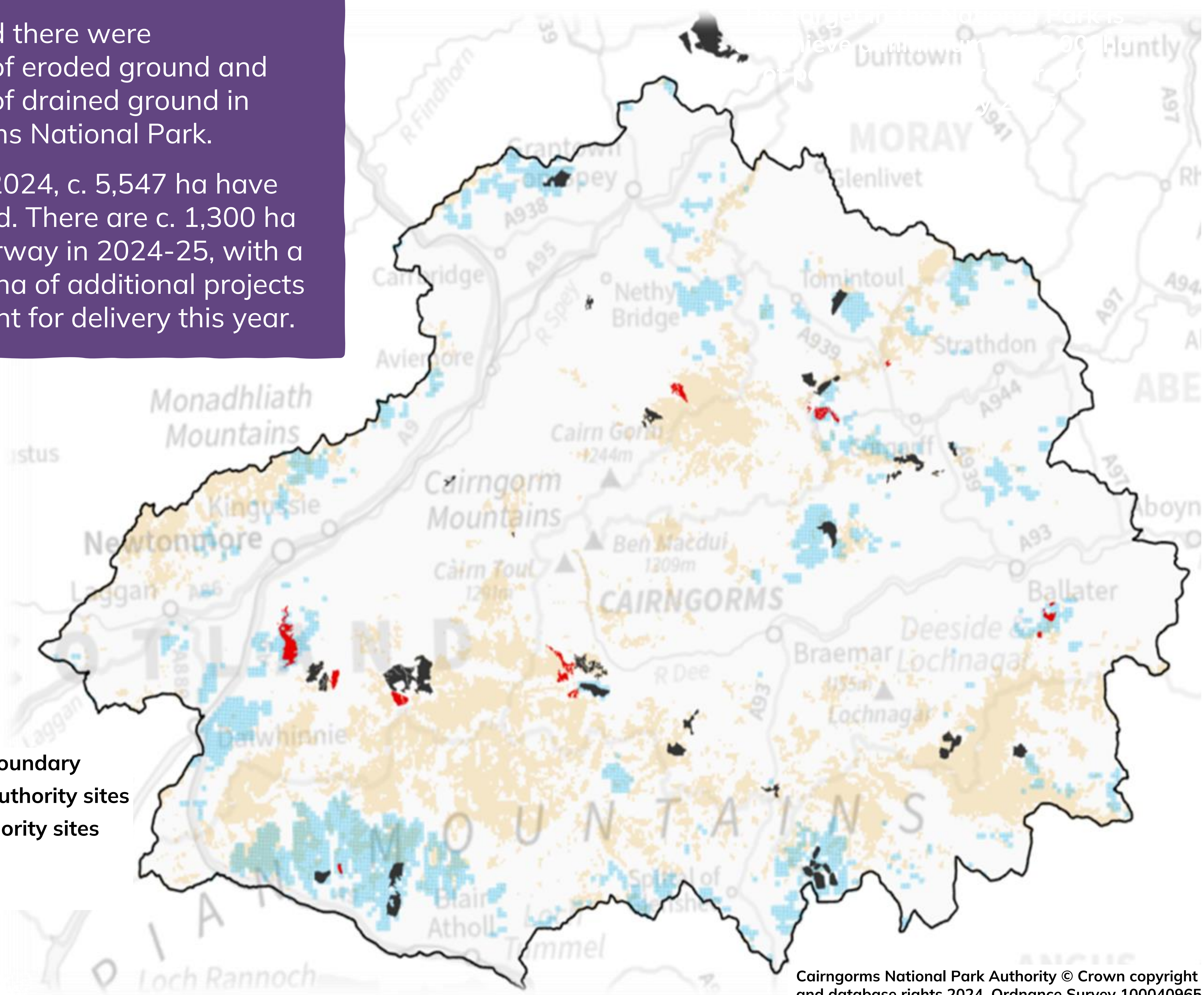


We estimated there were
c. 57,000 ha of eroded ground and
c. 42,000 ha of drained ground in
the Cairngorms National Park.

As of March 2024, c. 5,547 ha have
been delivered. There are c. 1,300 ha
of work underway in 2024-25, with a
possible 700 ha of additional projects
in development for delivery this year.

-  National Park boundary
-  2023-24 Park Authority sites
-  Older Park Authority sites
-  Drained peat
-  Eroded peat



Cairngorms National Park Authority © Crown copyright
and database rights 2024. Ordnance Survey 100040965



Projects include bog
woodland restoration



Sites frequently have
challenging bare peat
with poor turf availability



The National Park has large
expanses of drained peatland
with variable peat depths



Overburning on grouse moors
has left a legacy of poor turf
condition to work with



There are expanses of complex
erosion with no machine access,
at high elevations – most of this
work sits at 600-900m asl



Severe winter weather
can span from October to
March in the Cairngorms



Herbivore impacts may limit
choices for restoration
techniques in places



Contact the team:
peatlandaction
@cairngorms.co.uk